

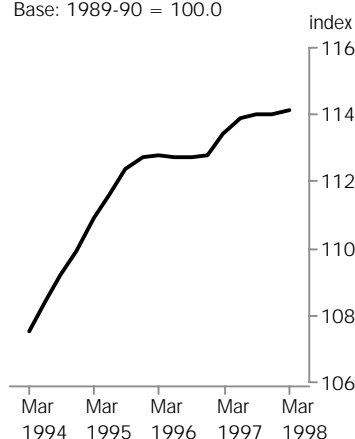
PRICE INDEX OF MATERIALS USED IN BUILDING OTHER THAN HOUSE BUILDING

SIX
STATE
CAPITAL
CITIES

EMBARGO: 11:30AM (CANBERRA TIME) MON 20 APR 1998

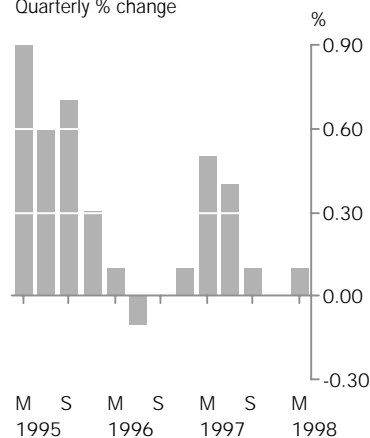
All groups

Base: 1989-90 = 100.0



All groups

Quarterly % change



MARCH QTR KEY FIGURES

	% change Dec Qtr 97 to Mar Qtr 98	% change Mar Qtr 97 to Mar Qtr 98
Weighted average of six State capital cities	0.1	0.6
Sydney	0.2	1.1
Melbourne	0.1	0.3
Brisbane	0.0	0.8
Adelaide	-0.1	0.4
Perth	-0.5	-0.6
Hobart	0.4	1.0

MARCH QTR KEY POINTS

WEIGHTED AVERAGE INDEX

- The main movement within the index was due to increased prices of concrete masonry blocks and other precast concrete products. These increases were largely offset by decreases in prices for structural steel, mains cable, taps and valves and glass products.

CAPITAL CITIES INDEXES

- Concrete masonry blocks prices increased in all cities except Hobart which recorded a decrease.
- Prices for other precast concrete products increased in all cities except Brisbane and Perth.
- Structural steel prices fell in Sydney, Melbourne and Brisbane while prices rose in Perth and Hobart with Adelaide showing no change.
- Mains cable prices fell in Sydney, Melbourne and Brisbane while a small increase was recorded for Adelaide. Perth and Hobart showed no change.
- All cities except Hobart showed price decreases for taps and valves.
- Prices for glass products decreased in Perth and Hobart with all other cities recording no change except for Adelaide which increased.

- For further information about these and related statistics, contact Robert Adams on 02 6252 6198, or any ABS Office.

NOTES

FORTHCOMING ISSUES

ISSUE (Quarter)

RELEASE DATE

June 1998

21 July 1998

September 1998

21 October 1998

.....

CHANGES IN THIS ISSUE

There are no changes in this issue.

.....

RELATED STATISTICS

For more information about the statistics in this publication and the availability of related unpublished statistics, contact Robert Adams on fax (02) 6252 7060, or email robert.adams@abs.gov.au.

.....

W. McLennan
Australian Statistician

ALL GROUPS INDEXES, Index Numbers(a)

<i>Period</i>	<i>Weighted average of six State capital cities</i>	<i>Sydney</i>	<i>Melbourne</i>	<i>Brisbane</i>	<i>Adelaide</i>	<i>Perth</i>	<i>Hobart</i>
1993-94	107.5	107.0	106.7	110.2	107.9	107.1	110.1
1994-95	110.4	110.3	108.9	112.9	110.9	110.1	112.2
1995-96	112.7	112.6	111.1	115.0	112.7	113.2	115.1
1996-97	113.2	113.1	110.9	115.9	114.1	114.6	116.3
1994							
March	107.5	106.8	106.8	110.1	108.3	107.1	109.8
June	108.4	108.1	107.3	110.7	108.8	107.8	110.1
September	109.2	109.0	107.9	111.3	109.5	108.8	110.9
December	109.9	109.7	108.6	112.3	110.5	109.3	111.6
1995							
March	110.9	110.8	109.4	113.5	111.7	110.6	112.4
June	111.6	111.6	109.7	114.4	111.9	111.7	113.8
September	112.4	112.4	110.6	115.2	112.4	112.7	114.8
December	112.7	112.7	111.2	115.0	112.5	113.1	115.3
1996							
March	112.8	112.6	111.4	115.0	112.8	113.4	115.2
June	112.7	112.5	111.3	114.9	112.9	113.5	115.2
September	112.7	112.5	110.8	115.2	113.1	114.0	115.8
December	112.8	112.6	110.4	115.5	114.1	114.3	116.1
1997							
March	113.4	113.2	111.1	116.1	114.5	114.9	116.5
June	113.9	113.9	111.3	116.9	114.7	115.2	116.7
September	114.0	114.2	111.2	117.5	114.8	115.3	116.5
December	114.0	114.2	111.3	117.0	115.1	114.8	117.2
1998							
March	114.1	114.4	111.4	117.0	115.0	114.2	117.7

(a) Base of each index: 1989-90 = 100.0

ALL GROUPS INDEXES, Percentage Changes

Period	Weighted average of six State capital cities	Sydney	Melbourne	Brisbane	Adelaide	Perth	Hobart
PERCENTAGE CHANGE (from previous year)							
1993-94	1.4	0.5	2.2	1.2	2.7	1.3	1.7
1994-95	2.7	3.1	2.1	2.5	2.8	2.8	1.9
1995-96	2.1	2.1	2.0	1.9	1.6	2.8	2.6
1996-97	0.4	0.4	-0.2	0.8	1.2	1.2	1.0
PERCENTAGE CHANGE (from corresponding quarter of previous year)							
1994							
March	1.3	0.6	2.0	0.7	2.8	1.1	1.4
June	1.8	1.6	1.8	1.1	2.4	1.6	1.0
September	2.1	2.3	1.7	1.2	2.2	2.0	0.7
December	2.5	3.0	1.8	2.3	2.8	2.3	1.3
1995							
March	3.2	3.7	2.4	3.1	3.1	3.3	2.4
June	3.0	3.2	2.2	3.3	2.8	3.6	3.4
September	2.9	3.1	2.5	3.5	2.6	3.6	3.5
December	2.5	2.7	2.4	2.4	1.8	3.5	3.3
1996							
March	1.7	1.6	1.8	1.3	1.0	2.5	2.5
June	1.0	0.8	1.5	0.4	0.9	1.6	1.2
September	0.3	0.1	0.2	0.0	0.6	1.2	0.9
December	0.1	-0.1	-0.7	0.4	1.4	1.1	0.7
1997							
March	0.5	0.5	-0.3	1.0	1.5	1.3	1.1
June	1.1	1.2	0.0	1.7	1.6	1.5	1.3
September	1.2	1.5	0.4	2.0	1.5	1.1	0.6
December	1.1	1.4	0.8	1.3	0.9	0.4	0.9
1998							
March	0.6	1.1	0.3	0.8	0.4	-0.6	1.0
PERCENTAGE CHANGE (from previous quarter)							
1994							
March	0.3	0.3	0.1	0.3	0.7	0.3	-0.4
June	0.8	1.2	0.5	0.5	0.5	0.7	0.3
September	0.7	0.8	0.6	0.5	0.6	0.9	0.7
December	0.6	0.6	0.6	0.9	0.9	0.5	0.6
1995							
March	0.9	1.0	0.7	1.1	1.1	1.2	0.7
June	0.6	0.7	0.3	0.8	0.2	1.0	1.2
September	0.7	0.7	0.8	0.7	0.4	0.9	0.9
December	0.3	0.3	0.5	-0.2	0.1	0.4	0.4
1996							
March	0.1	-0.1	0.2	0.0	0.3	0.3	-0.1
June	-0.1	-0.1	-0.1	-0.1	0.1	0.1	0.0
September	0.0	0.0	-0.4	0.3	0.2	0.4	0.5
December	0.1	0.1	-0.4	0.3	0.9	0.3	0.3
1997							
March	0.5	0.5	0.6	0.5	0.4	0.5	0.3
June	0.4	0.6	0.2	0.7	0.2	0.3	0.2
September	0.1	0.3	-0.1	0.5	0.1	0.1	-0.2
December	0.0	0.0	0.1	-0.4	0.3	-0.4	0.6
1998							
March	0.1	0.2	0.1	0.0	-0.1	-0.5	0.4

ALL GROUPS INDEX(a), Contribution of Major Building Materials

Category	December Qtr 1997	March Qtr 1998	Change
----------	-------------------	----------------	--------

Weighted average of six State capital cities	114.0	114.1	0.1
---	--------------	--------------	------------

GROUPS: Contribution to Weighted Average of six State capital cities index (index points)

Structural timber	0.83	0.86	0.03
Joinery products	4.65	4.65	0.00
Clay bricks	1.58	1.62	0.04
Ready mixed concrete	10.16	10.13	-0.03
Precast concrete products	4.05	4.07	0.02
Plaster and plaster products	1.64	1.63	-0.01
Steel decking and cladding	3.37	3.35	-0.02
Structural steel	9.66	9.60	-0.06
Reinforcing steel bar, fabric and mesh	7.77	7.72	-0.05
Aluminium windows	6.27	6.26	-0.01
Aluminium screens, doors and louvres	1.89	1.91	0.02
Suspended ceilings and access floors	1.11	1.12	0.01
Fabricated steel products	3.84	3.83	-0.01
Builders' hardware	1.40	1.42	0.02
Elevators, escalators and travelators	5.79	5.80	0.01
Sand and aggregate	0.14	0.14	0.00
Carpet	2.69	2.72	0.03
Paint and other coatings	1.17	1.16	-0.01
Non-ferrous pipes and fittings	2.15	2.11	-0.04
Conductors	2.29	2.21	-0.08
Switchboards and switchgear	2.19	2.19	0.0
Lamps and light fittings	2.21	2.21	0.0
Fire protection	3.57	3.58	0.01
Air conditioning equipment excluding piping and electrical materials	10.03	10.00	-0.03

(a) For an explanation of this table see paragraph 18 of the Explanatory Notes

SELECTED ANZSIC GROUPS, Index Numbers(a)

WEIGHTED AVERAGE OF SIX STATE CAPITAL
CITIES.....

Period	Wood and wood products (231-232)	Ceramics (262)	Cement, plaster and concrete products (263)	Iron and steel products (271)	Structural metal products (274)	Sheet metal products (275)	Fabricated metal products (276)	Electrical equipment and appliances (285)	Industrial machinery and equipment (286)	Other materials	All groups
1993-94	112.8	107.7	107.1	112.1	105.1	110.2	116.2	105.5	106.1	108.2	107.5
1994-95	115.0	109.8	111.7	113.3	107.0	113.4	118.0	111.0	107.1	111.8	110.4
1995-96	114.6	111.4	110.6	116.0	109.9	117.3	121.6	117.2	110.4	114.4	112.7
1996-97	115.5	112.2	110.5	117.7	111.1	119.0	124.3	114.4	110.8	114.8	113.2
1994											
March	113.5	107.5	106.7	111.3	105.3	110.2	116.5	105.0	106.0	108.3	107.5
June	114.6	107.6	109.6	113.5	105.6	111.3	116.7	106.2	105.9	108.6	108.4
September	114.9	108.6	111.2	113.6	105.7	112.2	116.7	107.6	106.6	109.9	109.2
December	114.9	109.8	111.5	113.3	106.5	112.8	117.6	109.7	106.5	111.1	109.9
1995											
March	115.0	110.3	111.9	113.1	107.7	113.5	118.1	112.2	107.3	112.7	110.9
June	115.2	110.6	112.2	113.2	108.2	115.1	119.5	114.4	107.9	113.6	111.6
September	114.9	111.6	111.7	114.6	109.2	116.9	120.7	117.3	108.8	114.4	112.4
December	114.3	111.7	110.9	114.6	110.1	117.0	121.3	117.4	110.2	114.5	112.7
1996											
March	114.4	111.7	110.2	117.6	110.1	117.5	121.5	117.4	110.7	114.2	112.8
June	114.7	110.6	109.4	117.2	110.0	117.8	123.0	116.7	111.7	114.5	112.7
September	115.2	111.1	109.6	116.0	110.4	117.4	122.8	114.1	112.0	114.5	112.7
December	114.9	111.6	110.0	116.1	111.0	118.4	124.0	113.7	110.8	114.2	112.8
1997											
March	115.5	112.8	110.7	118.7	111.3	119.6	124.9	114.8	110.3	114.9	113.4
June	116.2	113.2	111.6	120.0	111.8	120.4	125.6	115.1	110.0	115.5	113.9
September	116.7	114.1	111.7	119.8	111.7	120.5	125.8	115.5	109.9	115.7	114.0
December	117.4	115.4	111.8	119.7	112.1	120.3	125.9	114.1	110.2	115.1	114.0
1998											
March	118.4	116.7	112.4	119.4	112.0	120.4	125.6	113.2	110.6	114.7	114.1

(a) Base of each index: 1989-90 = 100.0

SELECTED BUILDING MATERIALS, Index Numbers(a)

WEIGHTED AVERAGE OF SIX STATE CAPITAL
CITIES.....

<i>Period</i>	<i>Structural timber</i>	<i>Hardwood</i>	<i>Softwood</i>	<i>Plywood and board</i>	<i>Joinery products</i>	<i>Ceramic sanitary- ware</i>	<i>Ceramic tiles</i>	<i>Clay bricks</i>	<i>Cement</i>	<i>Ready mixed concrete</i>
1993-94	127.1	114.0	137.4	113.9	108.9	115.8	102.9	107.8	108.5	106.7
1994-95	128.3	122.7	137.4	117.5	110.9	120.2	102.3	111.0	109.8	112.4
1995-96	120.5	121.7	127.8	111.0	113.4	127.5	102.5	110.0	113.9	108.2
1996-97	116.4	118.6	123.2	108.2	116.1	135.9	99.8	108.7	116.3	106.6
1994										
March	128.5	114.3	139.2	115.5	109.3	115.8	102.3	108.0	108.2	105.7
June	130.3	117.8	140.8	118.0	109.8	115.8	102.4	108.1	108.2	110.6
September	128.7	119.0	138.6	118.6	110.3	117.6	102.4	109.5	108.5	112.6
December	128.5	122.1	137.8	118.0	110.6	120.8	102.3	110.7	109.3	112.6
1995										
March	128.3	123.2	137.3	117.2	111.0	121.2	102.3	111.5	110.5	112.4
June	127.5	126.3	135.7	116.0	111.8	121.2	102.1	112.4	110.8	112.0
September	124.7	123.9	132.6	113.0	112.6	125.4	102.2	112.1	111.2	110.6
December	120.9	122.6	128.1	110.7	113.0	127.5	102.9	110.5	113.0	109.0
1996										
March	119.5	121.0	126.7	110.6	113.4	128.4	103.1	109.7	115.4	107.4
June	117.0	119.2	123.8	109.8	114.6	128.7	101.9	107.6	116.0	105.9
September	116.1	117.6	123.0	108.8	115.6	131.5	101.2	107.6	116.0	105.8
December	115.0	116.8	121.8	107.2	115.8	134.0	100.2	108.1	116.0	106.0
1997										
March	116.5	119.9	123.2	107.8	116.2	138.6	99.7	108.6	116.3	107.1
June	118.0	120.1	124.9	108.9	116.7	139.5	97.9	110.4	116.8	107.5
September	119.6	120.4	126.8	108.6	117.1	139.6	98.0	112.7	116.3	107.5
December	119.9	120.8	127.2	108.9	118.1	144.2	97.9	112.7	117.2	107.2
1998										
March	123.0	121.5	130.9	109.8	118.7	146.1	97.3	115.5	117.4	106.9

(a) Base of each index: 1989-90 = 100.0

SELECTED BUILDING MATERIALS, Index Numbers(a) *continued*WEIGHTED AVERAGE OF SIX STATE CAPITAL
CITIES.....

<i>Period</i>	<i>Precast concrete products</i>	<i>Concrete masonry blocks</i>	<i>Plaster and plaster products</i>	<i>Fibrous cement products</i>	<i>Steel decking and cladding</i>	<i>Cast iron pipes and products</i>	<i>Structural steel</i>	<i>Reinforcing steel bar, fabric and mesh</i>	<i>Aluminium windows</i>	<i>Aluminium screens, doors, louvres</i>
1993-94	108.1	106.5	112.3	112.8	107.5	128.4	104.3	112.7	99.7	101.6
1994-95	112.3	106.5	113.6	117.7	108.9	132.1	105.3	111.5	105.4	109.2
1995-96	115.0	112.8	114.9	120.5	110.9	132.4	109.3	112.0	108.4	114.8
1996-97	117.5	114.1	116.3	122.7	112.9	132.8	112.5	111.6	108.5	115.7
1994										
March	108.6	105.8	112.7	113.0	106.3	128.3	104.5	113.0	99.7	101.4
June	109.1	105.5	112.3	114.1	109.3	129.5	105.1	112.5	100.2	102.6
September	110.5	103.6	112.9	116.8	109.3	132.1	104.8	112.3	101.4	103.7
December	112.3	103.5	112.8	117.2	109.0	132.2	104.8	111.8	104.5	106.9
1995										
March	113.3	107.5	113.7	117.1	108.8	132.1	105.6	111.4	107.1	111.9
June	113.0	111.3	115.1	119.6	108.3	131.9	106.0	110.6	108.5	114.2
September	114.3	112.3	114.7	120.6	109.5	131.9	106.9	112.9	108.7	114.8
December	115.0	111.7	114.7	120.6	109.0	131.6	109.7	112.7	108.5	114.7
1996										
March	115.3	113.3	114.4	120.6	112.8	133.1	110.2	111.9	108.3	114.9
June	115.3	114.0	115.6	120.3	112.3	132.9	110.5	110.5	108.1	114.9
September	116.2	113.9	115.7	122.4	111.2	132.3	111.2	110.9	108.0	114.9
December	117.2	113.5	115.7	122.7	110.9	132.5	112.7	111.1	108.6	115.0
1997										
March	117.9	113.6	115.7	122.7	114.1	132.9	113.1	111.4	108.5	115.6
June	118.8	115.2	118.1	123.1	115.5	133.5	112.9	112.9	108.7	117.1
September	119.3	116.0	118.5	123.5	115.4	133.5	112.9	113.2	108.5	115.4
December	119.2	116.1	120.7	124.2	115.2	133.6	113.6	112.7	109.0	115.1
1998										
March	120.7	123.6	120.1	124.9	114.5	131.9	112.9	112.7	108.8	116.1

(a) Base of each index: 1989-90 = 100.0

SELECTED BUILDING MATERIALS, Index Numbers(a) *continued*

WEIGHTED AVERAGE OF SIX STATE CAPITAL CITIES.....

Period	<i>Suspended ceilings and access floors</i>	<i>Fabricated steel products</i>	<i>Sheet steel sanitary- ware</i>	<i>Builders' hardware</i>	<i>Sand and aggregate</i>	<i>Carpet</i>	<i>Paint and other coatings</i>	<i>Glass products</i>	<i>Non- ferrous pipes and fittings</i>	<i>Plastic floor coverings</i>
1993-94	100.1	107.3	114.3	115.3	118.7	99.2	119.9	102.5	102.4	110.0
1994-95	102.2	108.9	116.4	116.6	121.6	99.4	123.3	105.7	118.1	114.7
1995-96	105.3	111.9	121.6	119.5	119.1	102.6	129.1	110.2	129.4	119.9
1996-97	105.7	114.6	122.1	118.3	119.5	103.3	135.7	112.9	128.8	114.3
1994										
March	99.9	107.5	114.8	115.7	119.6	99.4	120.0	102.2	101.4	110.2
June	100.6	108.0	115.1	116.3	120.3	99.5	120.0	103.5	103.7	110.5
September	100.8	107.9	115.2	116.3	121.9	99.2	121.1	103.9	109.7	110.8
December	101.1	108.0	115.0	116.3	122.0	99.0	122.5	104.4	116.9	111.8
1995										
March	102.8	109.4	115.8	116.0	121.7	99.1	124.4	105.1	122.8	117.7
June	104.1	110.1	119.5	117.8	120.7	100.2	125.2	109.2	122.9	118.6
September	104.6	110.9	121.5	119.2	120.5	101.1	127.5	109.6	129.7	119.5
December	104.5	111.4	121.5	119.2	118.6	102.4	128.1	109.8	128.9	120.1
1996										
March	106.0	111.9	121.6	118.9	118.7	103.2	129.4	109.8	128.4	121.1
June	106.2	113.2	121.9	120.5	118.4	103.6	131.3	111.7	130.5	118.9
September	106.1	114.1	122.2	119.2	118.4	103.0	135.8	112.3	128.7	115.6
December	106.1	114.0	122.2	117.7	118.7	103.1	136.3	113.1	125.6	114.5
1997										
March	105.8	115.0	121.8	118.0	120.1	103.3	135.5	113.1	129.4	113.5
June	104.9	115.1	122.2	118.3	120.9	103.7	135.0	113.1	131.4	113.5
September	104.9	115.8	122.3	118.7	121.0	103.2	135.3	113.1	134.5	113.7
December	105.3	116.3	121.2	119.0	121.1	102.2	135.7	109.0	138.0	113.7
1998										
March	106.4	116.5	120.5	120.8	121.2	103.5	135.4	108.4	135.4	112.4

(a) Base of each index: 1989-90 = 100.0

SELECTED MAJOR BUILDING MATERIALS, Index Numbers(a)–Sydney and Melbourne

Period	Struct- ural timber	Clay bricks	Ready mixed concrete	Pre- cast concrete products	Steel decking and cladding	Struct- ural steel	Re- inforcing steel bar, fabric and mesh	Alu- minium windows	Fabri- cated steel products	Builders' hardware	Sand and aggregate	Carpet	Paint and other coatings	Non- ferrous pipes and fittings
SYDNEY														
1993-94	132.3	99.7	90.4	105.6	110.8	110.0	121.3	98.3	104.6	115.0	113.3	98.8	122.5	109.0
1994-95	132.0	103.8	100.8	109.5	111.6	107.8	119.3	106.2	105.7	118.1	116.4	99.4	123.8	124.8
1995-96	121.5	102.8	99.2	112.3	112.4	110.0	120.6	109.3	109.7	123.2	113.8	103.5	124.9	136.2
1996-97	118.0	98.3	97.9	115.0	114.9	112.6	120.2	109.8	112.6	118.1	113.5	104.2	132.0	137.7
1994														
March	133.7	100.2	88.1	105.9	109.2	110.1	121.6	98.4	104.3	116.1	113.1	99.1	122.5	107.5
June	135.3	100.5	97.1	106.0	112.4	109.7	120.9	99.5	105.3	117.9	114.0	99.2	122.5	112.1
September	133.1	101.8	100.2	108.6	112.3	108.4	120.6	100.9	104.5	117.2	116.3	98.9	122.9	116.3
December	133.0	103.9	100.7	109.9	111.8	107.0	119.4	105.5	104.7	117.2	116.3	98.9	123.9	123.0
1995														
March	131.9	104.1	100.9	110.5	111.3	107.5	118.9	108.2	106.4	117.3	116.3	98.5	124.2	130.4
June	129.9	105.3	101.2	109.1	111.0	108.3	118.3	110.2	107.1	120.6	116.8	101.1	124.3	129.6
September	127.1	105.1	100.7	111.6	111.7	108.2	121.0	109.9	108.4	121.9	116.8	101.3	123.8	135.3
December	121.6	104.4	100.2	112.5	110.8	110.5	121.1	109.4	108.7	122.3	112.9	102.8	123.1	135.6
1996														
March	120.0	103.4	98.5	112.7	113.6	110.7	120.4	108.9	109.8	122.4	113.2	104.7	125.0	135.6
June	117.3	98.1	97.4	112.3	113.3	110.6	119.9	108.9	111.7	126.3	112.2	105.0	127.8	138.2
September	118.0	97.4	97.6	113.3	113.4	111.8	119.4	108.9	113.4	120.9	112.1	104.1	132.4	137.0
December	117.1	97.2	97.7	115.1	113.0	113.2	118.5	110.3	113.0	117.4	112.8	104.2	132.6	133.7
1997														
March	117.6	97.8	98.1	115.2	115.6	113.2	119.6	110.1	112.4	116.9	113.8	104.2	130.7	138.8
June	119.4	100.8	98.3	116.3	117.6	112.3	123.1	109.9	111.4	117.3	115.2	104.1	132.1	141.3
September	121.3	104.3	98.7	117.2	117.7	111.9	123.8	109.2	113.0	117.6	115.4	103.1	131.8	144.7
December	122.4	104.4	98.8	116.5	117.7	113.9	124.2	110.3	114.0	118.1	115.8	99.1	133.4	149.8
1998														
March	126.8	108.4	98.4	118.7	117.7	112.5	124.6	111.0	113.5	122.4	116.2	102.1	134.0	149.8
MELBOURNE														
1993-94	119.5	109.3	123.4	99.3	104.7	93.3	102.0	96.5	109.4	116.2	119.5	98.3	125.1	86.6
1994-95	123.0	112.3	124.2	104.8	106.5	95.3	101.8	98.8	110.7	113.7	118.5	98.5	131.2	100.8
1995-96	116.1	112.1	118.6	108.1	109.9	100.9	102.7	100.8	113.1	114.5	114.6	101.6	141.2	112.2
1996-97	110.1	113.1	111.5	110.3	109.2	104.3	100.7	100.6	116.7	116.5	115.9	101.6	145.8	111.5
1994														
March	120.7	109.4	123.4	100.2	104.0	93.8	102.4	96.6	109.8	115.2	120.5	98.6	125.4	86.6
June	123.8	109.4	124.7	100.9	106.6	94.3	102.4	96.2	109.8	113.5	120.5	98.6	125.7	86.4
September	122.2	110.8	124.7	101.5	106.8	94.7	102.3	96.0	109.8	114.6	120.5	98.5	128.0	93.1
December	121.5	111.0	124.2	104.3	106.8	95.3	102.3	98.6	109.8	113.9	120.5	98.5	129.4	100.0
1995														
March	123.6	113.0	124.0	106.1	106.8	95.6	102.2	100.3	111.3	112.8	118.5	98.5	132.9	104.9
June	124.7	114.4	124.0	107.4	105.6	95.5	100.2	100.4	112.0	113.6	114.6	98.6	134.4	105.0
September	120.1	114.4	122.6	107.9	107.5	96.8	103.9	100.8	112.3	115.1	114.6	100.1	139.4	111.4
December	117.0	111.3	119.9	108.1	107.7	101.8	103.8	100.8	112.9	114.6	114.6	101.9	141.3	111.6
1996														
March	115.1	111.3	117.6	108.0	112.6	102.3	103.0	100.8	113.0	114.3	114.6	102.1	141.7	112.0
June	112.1	111.3	114.3	108.4	111.7	102.8	100.2	100.8	114.3	114.1	114.6	102.4	142.5	113.9
September	109.4	111.3	112.3	109.0	107.4	103.2	100.5	100.6	114.8	115.6	114.5	101.0	147.3	112.3
December	107.2	112.9	110.0	109.5	106.9	104.2	100.8	100.6	114.8	115.6	114.7	101.0	146.8	109.7
1997														
March	111.1	113.7	111.6	110.8	111.3	104.5	100.8	100.6	117.9	117.0	117.6	101.6	146.9	111.5
June	112.8	114.6	112.0	111.8	111.3	105.1	100.6	100.5	119.3	117.8	116.8	102.9	142.3	112.6
September	114.4	116.1	111.2	111.8	110.4	105.1	100.6	100.4	119.3	118.6	116.4	102.9	143.5	113.8
December	115.3	116.1	111.4	112.4	110.5	105.1	100.8	100.7	119.5	119.5	116.4	102.9	143.5	118.7
1998														
March	115.8	119.6	111.5	115.0	108.3	104.7	100.8	99.2	120.6	119.8	116.0	102.9	143.5	110.2

(a) Base of each index: 1989-90 = 100.0

SELECTED MAJOR BUILDING MATERIALS, Index Numbers(a)–Brisbane and Adelaide

Period	Struct- ural timber	Clay bricks	Ready mixed concrete	Pre- cast concrete products	Steel decking and cladding	Struct- ural steel	Re- inforcing steel bar, fabric and mesh	Alu- minium windows	Fabri- cated steel products	Builders' hardware	Sand and aggregate	Carpet	Paint and other coatings	Non- ferrous pipes and fittings
BRISBANE														
1993-94	123.7	113.2	114.8	112.8	105.6	118.7	119.3	100.4	114.7	110.1	141.0	95.5	112.6	126.4
1994-95	123.9	112.7	114.8	113.8	105.1	126.8	119.1	102.7	117.4	111.3	155.0	92.6	115.1	141.0
1995-96	115.7	102.0	105.2	111.3	107.4	135.6	114.6	104.8	117.2	109.0	156.6	93.1	122.7	155.0
1996-97	109.8	104.3	104.2	112.5	111.3	136.7	114.8	103.7	120.1	104.1	156.6	94.8	128.3	154.4
1994														
March	124.6	112.8	114.6	113.2	103.6	118.8	119.5	100.5	115.9	110.7	148.7	95.3	111.4	127.0
June	124.9	112.1	115.0	113.4	106.8	123.2	119.6	100.9	116.4	111.3	149.1	96.3	112.4	124.2
September	124.0	112.9	116.3	113.2	105.2	122.7	119.6	101.2	118.7	110.9	153.8	94.1	112.6	132.3
December	125.7	113.6	116.2	114.8	105.2	125.8	119.1	101.9	118.5	111.5	155.0	91.8	113.9	138.7
1995														
March	123.7	113.4	114.5	114.1	105.2	129.0	118.9	103.2	116.5	111.4	155.6	92.5	116.1	144.8
June	122.3	110.8	112.0	113.1	104.8	129.8	118.8	104.5	115.9	111.3	155.6	92.0	117.6	148.0
September	120.8	107.6	107.6	111.0	105.6	132.5	118.7	105.2	116.2	111.2	156.6	92.7	121.1	161.5
December	116.0	102.1	105.8	111.3	105.2	134.7	114.5	105.5	117.4	110.7	156.6	92.9	121.8	156.0
1996														
March	114.9	99.0	104.7	111.5	109.7	137.3	113.5	104.9	117.6	107.1	156.6	93.3	124.0	150.2
June	111.1	99.4	102.8	111.2	109.2	138.0	111.5	103.7	117.6	107.1	156.6	93.6	123.9	152.2
September	109.2	101.3	102.3	111.3	109.5	137.2	113.9	103.2	117.5	103.7	156.6	94.3	127.5	153.5
December	109.2	104.2	103.1	113.0	109.6	137.2	114.6	103.8	117.6	104.0	156.6	95.0	128.2	150.9
1997														
March	109.8	105.5	104.2	112.8	112.3	136.1	114.6	103.8	122.1	104.3	156.6	95.0	128.0	154.9
June	110.8	106.1	107.3	113.0	113.7	136.1	116.0	103.8	123.1	104.4	156.6	94.7	129.3	158.2
September	111.9	107.1	108.8	113.2	113.7	137.8	116.8	103.8	122.8	104.4	157.4	94.2	129.9	161.7
December	110.5	105.8	105.4	113.2	113.7	136.5	115.9	103.8	122.8	101.7	157.3	94.8	129.8	161.6
1998														
March	114.8	105.8	105.8	110.7	113.7	136.0	115.5	103.8	123.5	101.7	157.3	94.8	129.8	161.6
ADELAIDE														
1993-94	152.7	115.6	101.5	115.7	105.5	102.4	106.9	104.0	103.7	115.5	113.3	99.8	104.0	103.7
1994-95	153.3	119.0	112.1	118.1	108.3	106.6	106.5	110.9	107.1	118.6	114.5	101.6	109.6	117.3
1995-96	148.4	120.1	104.3	120.2	114.1	108.9	108.7	115.6	112.0	120.2	114.8	106.1	115.7	126.2
1996-97	148.6	117.5	110.5	120.1	118.2	113.0	113.0	116.8	112.3	122.5	116.7	111.2	126.3	122.6
1994														
March	156.1	115.9	102.8	115.6	104.8	102.2	106.9	103.9	104.0	116.0	113.1	99.5	104.3	101.2
June	156.0	115.9	108.1	115.9	107.7	103.1	106.5	104.6	104.0	117.0	113.4	100.0	103.6	102.4
September	154.3	117.5	112.3	115.9	108.3	103.9	106.5	107.6	104.7	118.2	114.4	100.3	106.7	107.0
December	154.3	118.7	112.7	118.3	108.3	106.3	106.5	110.1	104.7	118.7	114.4	100.4	109.0	116.5
1995														
March	153.9	119.9	112.4	118.9	108.3	108.0	106.5	112.8	108.2	118.7	114.7	102.6	111.3	123.7
June	150.8	120.0	111.1	119.2	108.3	108.0	106.5	113.2	110.8	118.9	114.5	102.9	111.4	121.9
September	149.5	120.1	106.7	119.9	111.2	108.0	107.3	115.3	112.0	120.1	114.5	105.3	113.6	130.0
December	148.4	120.4	103.6	120.0	111.8	108.7	109.1	115.3	111.9	120.1	114.5	106.2	114.7	125.9
1996														
March	148.1	119.9	103.4	120.4	116.7	109.0	109.1	115.7	111.9	120.1	114.8	106.1	115.6	124.2
June	147.5	119.9	103.5	120.5	116.7	109.7	109.1	115.9	112.3	120.5	115.4	106.6	118.8	124.6
September	147.5	119.6	103.0	120.4	116.7	109.7	111.0	116.5	112.3	122.3	115.4	108.3	123.0	122.6
December	148.4	118.1	111.7	119.3	116.7	113.0	113.7	116.5	112.3	122.5	115.2	110.6	128.2	120.3
1997														
March	148.9	115.6	113.1	119.5	118.7	114.6	113.7	116.5	112.3	122.5	116.4	112.4	127.7	123.1
June	149.6	116.5	114.1	121.1	120.5	114.6	113.7	117.6	112.2	122.5	119.7	113.5	126.3	124.4
September	152.5	116.5	115.0	121.2	120.5	114.6	113.7	117.6	112.1	122.5	120.6	113.5	125.6	126.8
December	149.5	118.4	115.1	121.8	120.1	114.5	113.7	118.8	113.2	122.5	120.6	113.5	122.9	128.0
1998														
March	157.8	118.4	112.9	122.7	120.1	114.5	113.7	119.4	113.2	121.8	119.2	113.5	114.9	124.6

(a) Base of each index: 1989-90 = 100.0

SELECTED MAJOR BUILDING MATERIALS, Index Numbers(a)–Perth and Hobart

Period	Struct- ural timber	Clay bricks	Ready mixed concrete	Pre- cast concrete products	Steel decking and cladding	Struct- ural steel	Re- inforcing steel bar, fabric and mesh	Alu- minium windows	Fabri- cated steel products	Builders' hardware	Sand and aggregate	Carpet	Paint and other coatings	Non- ferrous pipes and fittings
PERTH														
1993-94	110.6	113.9	116.6	122.5	106.3	100.4	112.3	104.5	107.1	119.6	116.4	105.0	120.6	95.1
1994-95	110.6	118.0	117.8	127.9	108.6	103.6	110.7	112.5	108.5	122.9	119.9	105.2	124.0	115.2
1995-96	109.3	120.7	115.0	133.0	108.6	107.5	109.4	118.1	110.3	127.5	115.9	105.9	136.4	127.5
1996-97	106.6	124.1	120.1	139.7	112.7	113.9	108.3	117.0	111.4	135.2	116.2	103.5	144.3	121.2
1994														
March	110.7	113.6	116.2	124.6	105.8	100.5	113.0	104.2	107.7	120.2	116.5	105.1	121.1	94.2
June	111.8	114.5	116.8	125.3	107.6	102.9	111.7	105.5	108.6	121.9	118.9	105.1	119.9	97.7
September	111.7	116.8	119.4	126.2	108.5	103.3	111.0	108.1	107.9	122.1	119.2	105.1	119.5	108.2
December	111.1	117.8	117.8	126.6	108.6	103.4	111.0	109.2	108.0	122.5	119.2	105.1	121.5	117.1
1995														
March	109.7	117.8	117.3	129.3	108.6	103.7	110.9	114.3	108.9	122.7	120.4	105.2	126.3	116.6
June	109.9	119.4	116.5	129.3	108.6	103.8	110.0	118.2	109.3	124.1	120.9	105.2	128.7	118.9
September	109.8	120.2	116.3	130.5	108.2	105.8	110.5	118.2	109.9	126.6	117.5	105.9	133.9	126.4
December	109.7	120.2	114.7	131.7	106.5	107.3	110.7	118.2	110.2	127.1	115.3	105.9	135.7	127.1
1996														
March	109.1	120.2	114.2	134.4	109.8	108.2	109.7	118.2	110.4	128.1	115.3	105.9	136.7	127.2
June	108.6	122.3	114.7	135.5	109.8	108.6	106.5	117.6	110.7	128.1	115.3	105.9	139.2	129.4
September	106.8	123.5	119.6	137.7	109.8	109.9	107.5	116.4	111.0	135.0	115.5	105.9	143.6	121.3
December	105.6	123.6	119.5	138.7	109.8	113.4	110.2	116.4	111.2	135.0	115.7	103.5	143.6	117.5
1997														
March	106.9	123.6	121.0	140.6	114.4	116.1	108.1	116.4	111.3	135.6	115.7	102.3	143.8	122.3
June	107.2	125.5	120.1	141.6	116.9	116.1	107.3	118.8	111.9	135.1	118.0	102.3	146.3	123.7
September	107.2	127.4	118.8	141.6	116.9	116.1	107.0	118.8	111.6	135.0	118.3	102.3	147.5	131.5
December	107.4	127.4	117.2	142.4	116.6	116.1	99.9	118.8	111.5	137.1	118.2	108.8	147.5	130.7
1998														
March	106.4	127.6	116.8	141.6	115.6	116.7	98.3	117.0	111.8	136.4	119.5	108.8	147.4	131.4
HOBART														
1993-94	115.9	114.2	117.5	112.9	106.4	116.0	109.1	100.5	106.6	115.7	129.6	102.1	114.1	133.2
1994-95	124.5	116.8	117.8	122.2	107.7	116.4	106.7	101.2	106.7	112.8	133.0	102.6	116.0	172.7
1995-96	119.0	122.6	115.2	129.5	111.5	121.4	108.9	104.5	108.9	118.3	133.1	105.0	120.1	172.9
1996-97	110.3	125.3	116.2	132.2	115.0	126.2	110.7	105.9	113.3	117.2	132.7	105.9	126.6	165.2
1994														
March	116.3	115.5	117.4	110.3	106.0	116.0	108.8	101.2	106.0	116.2	129.3	102.2	114.0	130.2
June	121.1	115.5	118.7	120.6	107.7	116.0	107.9	97.1	106.1	117.0	130.7	102.2	114.6	142.9
September	123.5	115.6	118.5	121.2	107.7	116.0	107.5	98.9	106.1	111.0	132.7	102.2	116.1	154.2
December	123.9	115.7	118.0	122.4	107.7	116.0	107.2	99.6	106.1	110.8	133.1	102.2	116.9	169.5
1995														
March	124.6	118.0	117.0	122.5	107.8	116.0	106.4	101.8	106.9	113.6	133.1	102.2	115.9	182.7
June	125.8	118.0	117.8	122.5	107.4	117.5	105.8	104.5	107.6	115.8	133.1	103.7	115.0	184.2
September	123.0	119.8	116.9	130.3	110.8	119.6	107.9	104.5	107.6	119.4	133.1	104.5	118.2	179.4
December	120.0	123.2	116.0	130.3	111.0	121.2	109.2	104.5	108.3	119.2	133.1	104.6	119.7	169.1
1996														
March	118.0	123.4	115.3	129.1	111.8	121.9	109.2	104.6	108.2	117.9	133.1	105.0	121.5	169.3
June	115.0	124.0	112.7	128.4	112.3	123.0	109.2	104.4	111.6	116.5	133.1	105.9	121.1	173.9
September	113.3	124.5	114.8	132.6	112.3	125.3	110.2	104.4	112.6	117.8	133.1	105.9	126.3	168.2
December	109.9	125.2	116.0	132.6	112.2	126.0	110.9	105.5	113.5	118.8	133.1	105.9	127.3	161.4
1997														
March	109.2	125.7	116.7	132.2	116.5	126.7	110.9	106.8	113.4	117.1	134.5	105.9	127.4	164.1
June	108.9	125.7	117.4	131.2	118.8	126.8	110.9	106.8	113.5	115.2	129.9	105.9	125.5	167.2
September	107.5	127.9	114.9	131.2	118.9	126.9	110.9	106.8	114.0	115.3	121.4	105.9	124.6	168.5
December	106.6	129.4	116.8	131.2	118.9	127.1	113.0	106.8	114.0	112.5	121.4	105.9	123.5	163.0
1998														
March	109.2	129.4	120.4	131.7	118.9	127.4	113.5	106.8	114.8	112.8	127.5	106.4	130.5	162.9

(a) Base of each index: 1989-90 = 100.0

SPECIAL SERIES, Index Numbers(a)–Weighted Average of Six State Capital Cities

ELECTRICAL
MATERIALS.....

Period	<i>All groups excluding electrical materials and mechanical services</i>	<i>Conductors</i>	<i>Conduit and accessories</i>	<i>Switchboards and switchgear</i>	<i>Lamps and light fittings</i>	<i>All electrical materials</i>	<i>All electrical materials excluding lamps and light fittings</i>
1993-94	107.8	99.2	114.2	114.1	102.7	105.5	106.7
1994-95	110.6	114.2	126.1	116.5	104.2	112.2	116.1
1995-96	112.1	127.5	135.0	120.8	106.9	119.2	125.1
1996-97	112.9	113.9	135.3	123.6	106.4	115.6	119.9
1994							
March	107.8	97.4	114.9	114.7	102.2	104.9	106.1
June	108.9	99.5	117.2	115.5	103.9	106.6	107.7
September	109.6	104.0	118.4	115.5	104.1	108.1	110.0
December	110.2	110.9	119.3	115.8	103.9	110.4	113.5
1995							
March	111.0	117.5	133.7	117.0	104.4	114.1	118.7
June	111.5	124.4	133.1	117.6	104.3	116.3	122.1
September	112.0	130.8	135.2	119.4	105.6	119.5	126.2
December	112.1	128.6	136.3	120.3	106.9	119.6	125.6
1996							
March	112.1	126.7	135.3	121.2	108.0	119.4	125.0
June	112.0	123.7	133.0	122.1	107.1	118.3	123.7
September	112.2	114.5	135.5	122.7	106.3	115.5	119.9
December	112.4	112.0	136.5	122.8	106.4	114.8	118.8
1997							
March	113.1	114.2	136.0	124.1	106.5	115.9	120.3
June	113.7	114.9	133.1	124.6	106.4	116.0	120.5
September	113.9	117.1	134.6	124.6	104.8	116.3	121.8
December	114.0	112.8	131.3	124.5	104.9	115.6	119.8
1998							
March	114.1	109.3	132.0	124.4	104.7	115.3	119.5

(a) Base of each index: 1989-90 = 100.0

MECHANICAL SERVICES COMPONENTS.....					PLUMBING MATERIALS.....			
Period	Air conditioning	Fire protection	Elevators, escalators and travelators	All mechanical services	Hydraulic plumbing	Drainage	Roof plumbing	All plumbing materials
1993-94	111.0	110.6	90.9	107.5	110.9	115.7	107.4	110.5
1994-95	113.9	112.1	92.3	109.8	117.5	122.7	109.0	116.8
1995-96	117.1	115.9	97.3	113.7	124.5	124.3	108.6	123.2
1996-97	117.3	120.7	97.6	114.7	126.4	123.9	111.4	124.9
1994								
March	110.9	110.6	90.9	107.4	110.9	116.6	106.5	110.4
June	111.3	110.6	90.7	107.6	111.6	117.1	108.3	111.2
September	112.4	110.5	91.7	108.5	113.9	119.2	108.8	113.4
December	113.4	111.7	91.3	109.2	117.0	122.6	108.7	116.4
1995								
March	114.6	112.6	92.3	110.2	119.1	124.4	109.5	118.4
June	115.0	113.6	93.7	111.1	119.8	124.6	109.1	119.0
September	116.7	114.6	94.6	112.5	123.9	126.3	108.2	122.7
December	116.8	115.6	97.5	113.6	124.4	124.2	106.8	123.0
1996								
March	117.1	115.9	98.0	114.0	124.4	122.5	109.6	122.9
June	117.6	117.3	99.1	114.8	125.4	124.0	109.9	124.0
September	117.1	117.7	99.6	114.7	125.3	124.9	109.5	123.9
December	116.8	120.5	97.8	114.5	124.7	121.4	109.4	123.2
1997								
March	117.4	121.8	96.9	114.7	127.1	121.3	112.3	125.3
June	117.7	122.7	96.1	114.8	128.6	128.1	114.4	127.2
September	118.2	122.8	95.7	114.9	129.8	130.9	114.4	128.5
December	118.4	122.4	96.4	115.2	131.7	131.7	114.0	130.2
1998								
March	118.3	122.6	96.7	115.2	130.8	132.0	114.0	129.5

(a) Base of each index: 1989-90 = 100.0

ELECTRICAL
MATERIALS.....

Period	<i>All groups excluding electrical materials and mechanical services</i>	<i>Conductors</i>	<i>Conduit and accessories</i>	<i>Switchboards and switchgear</i>	<i>Lamps and light fittings</i>	<i>All electrical materials</i>	<i>All electrical materials excluding lamps and light fittings</i>
SYDNEY							
1993-94	106.7	105.5	112.3	116.1	100.6	107.2	110.0
1994-95	109.8	125.2	128.6	119.5	104.6	116.7	122.4
1995-96	111.4	139.7	142.5	124.8	108.5	125.1	132.9
1996-97	112.0	128.3	147.1	127.9	108.0	122.6	129.4
1994							
March	106.5	103.4	112.7	116.9	99.8	106.4	109.3
June	108.1	106.8	115.9	117.8	104.2	109.4	111.6
September	108.8	113.3	117.9	118.1	104.5	111.8	115.1
December	109.3	121.4	119.6	118.8	104.4	114.6	119.3
1995							
March	110.1	129.0	137.2	120.1	104.7	118.8	125.4
June	110.8	137.0	139.7	120.9	104.9	121.7	129.7
September	111.2	144.4	142.6	123.5	106.9	125.7	134.6
December	111.4	142.1	143.5	124.7	108.3	125.8	134.1
1996							
March	111.4	138.1	143.8	124.9	110.3	125.3	132.4
June	111.4	134.1	140.2	125.9	108.4	123.5	130.5
September	111.5	126.8	145.4	126.7	107.9	121.6	128.0
December	111.5	125.7	147.9	127.0	107.9	121.5	127.8
1997							
March	112.0	129.1	147.7	128.5	108.0	123.0	130.1
June	112.8	131.7	147.5	129.2	108.1	124.1	131.5
September	113.1	134.0	149.6	129.3	108.0	124.9	132.9
December	113.3	129.5	144.3	129.2	108.2	124.1	131.3
1998							
March	113.6	123.1	144.2	128.7	108.3	123.5	130.1
MELBOURNE							
1993-94	106.6	109.1	120.8	109.8	100.3	107.3	110.8
1994-95	108.5	126.0	129.8	112.2	99.2	113.6	120.8
1995-96	109.7	139.6	129.0	116.1	100.8	119.4	128.7
1996-97	110.0	116.3	120.9	118.0	101.1	112.0	117.6
1994							
March	106.8	107.0	121.8	110.1	100.6	106.9	110.1
June	107.3	109.7	125.1	111.2	99.9	108.0	112.1
September	107.7	115.7	127.4	111.4	99.5	110.0	115.3
December	108.3	122.5	125.2	111.8	99.1	112.0	118.5
1995							
March	108.9	129.5	138.0	112.5	99.5	115.5	123.5
June	109.0	136.2	128.6	112.9	98.6	116.7	125.8
September	109.5	142.3	130.6	114.4	98.7	119.3	129.5
December	109.8	140.4	131.8	115.5	101.4	119.9	129.2
1996							
March	109.8	140.1	129.3	117.2	101.9	120.3	129.5
June	109.6	135.5	124.3	117.1	101.3	118.2	126.7
September	109.5	119.4	123.4	117.2	101.2	113.0	119.0
December	109.4	115.7	123.4	117.1	101.2	111.8	117.2
1997							
March	110.2	116.4	122.3	118.6	101.5	112.5	118.1
June	110.7	113.7	114.5	118.9	100.5	110.8	116.0
September	110.6	115.9	115.4	119.0	96.8	110.4	117.2
December	110.9	111.3	114.0	118.6	96.8	109.8	116.1
1998							
March	110.9	109.6	114.0	120.0	97.1	110.3	116.8

(a) Base of each index: 1989-90 = 100.0

MECHANICAL SERVICES COMPONENTS.....					PLUMBING MATERIALS.....			
Period	Air conditioning	Fire protection	Elevators, escalators and travelators	All mechanical services	Hydraulic plumbing	Drainage	Roof plumbing	All plumbing materials
SYDNEY								
1993-94	112.0	112.0	90.0	108.3	121.0	116.2	109.4	116.6
1994-95	115.0	113.3	92.2	110.8	127.2	121.1	110.6	122.3
1995-96	117.8	114.9	96.1	113.9	135.1	125.2	103.3	129.1
1996-97	117.7	123.3	95.7	115.0	139.2	125.3	102.0	132.6
1994								
March	111.7	112.0	90.3	108.2	120.9	117.1	107.8	116.4
June	112.0	112.0	90.6	108.5	122.2	118.0	110.3	117.7
September	113.2	112.2	91.5	109.5	123.4	117.9	110.2	118.7
December	114.6	113.3	91.4	110.3	126.5	120.6	110.0	121.6
1995								
March	116.0	113.8	92.2	111.5	129.2	122.3	110.9	124.1
June	116.2	113.8	93.5	112.0	129.7	123.5	111.4	124.6
September	117.7	113.8	94.7	113.2	133.7	126.1	106.8	128.1
December	117.7	114.6	96.2	113.8	134.9	125.0	101.7	128.8
1996								
March	117.6	114.9	96.3	113.9	135.1	123.4	102.8	129.0
June	118.0	116.3	97.2	114.5	136.6	126.3	101.9	130.5
September	117.0	117.4	97.4	114.2	137.1	128.0	100.6	131.0
December	116.9	123.9	95.7	114.7	136.1	120.7	100.5	129.5
1997								
March	118.0	125.6	95.1	115.4	140.7	121.6	102.7	133.6
June	118.7	126.1	94.5	115.6	142.9	130.8	104.2	136.3
September	119.0	126.4	94.2	115.7	144.3	134.2	104.5	137.7
December	119.9	126.5	94.8	116.3	147.1	134.5	104.5	140.0
1998								
March	120.1	126.6	95.2	116.6	146.6	133.2	104.5	139.5
MELBOURNE								
1993-94	110.9	108.0	89.8	106.9	102.8	114.6	105.1	105.3
1994-95	114.0	107.5	91.0	108.9	110.1	124.4	108.4	112.6
1995-96	118.0	111.3	98.5	114.1	116.7	125.7	114.7	118.9
1996-97	118.1	112.4	100.4	115.0	117.6	127.4	122.0	120.1
1994								
March	111.0	108.2	89.6	106.9	103.3	115.1	104.7	105.6
June	111.9	107.5	89.3	107.2	103.7	116.2	105.9	106.1
September	113.1	106.8	90.5	108.1	107.0	121.1	107.6	109.5
December	113.7	107.1	90.0	108.3	110.1	125.0	107.6	112.6
1995								
March	114.2	107.8	90.6	108.9	111.4	126.3	109.2	113.9
June	114.9	108.3	92.7	110.1	112.0	125.2	109.2	114.4
September	117.2	110.5	94.1	112.2	115.3	126.1	110.9	117.6
December	117.6	111.5	98.6	113.9	116.6	124.4	113.1	118.7
1996								
March	118.1	111.5	99.7	114.6	117.0	124.3	116.3	119.1
June	118.9	111.5	101.6	115.6	117.8	127.9	118.6	120.2
September	118.1	111.5	102.9	115.6	117.4	127.7	118.7	119.9
December	117.9	111.7	100.7	114.9	117.4	126.9	118.7	119.8
1997								
March	118.0	112.0	99.6	114.6	117.3	125.0	124.0	119.7
June	118.2	114.4	98.2	114.7	118.1	130.0	126.7	120.9
September	118.8	114.4	97.7	114.8	118.7	132.3	125.7	121.6
December	118.5	112.8	98.8	114.8	121.5	135.1	125.1	124.3
1998								
March	118.1	112.8	98.8	114.6	119.4	136.7	125.1	122.8

(a) Base of each index: 1989-90 = 100.0

ELECTRICAL
MATERIALS.....

Period	<i>All groups excluding electrical materials and mechanical services</i>	<i>Conductors</i>	<i>Conduit and accessories</i>	<i>Switchboards and switchgear</i>	<i>Lamps and light fittings</i>	<i>All electrical materials</i>	<i>All electrical materials excluding lamps and light fittings</i>
BRISBANE							
1993-94	112.5	75.9	102.0	115.4	108.7	98.4	94.3
1994-95	115.4	91.1	109.9	117.6	104.9	103.1	103.1
1995-96	116.6	106.6	120.1	123.3	106.3	110.7	113.8
1996-97	117.6	98.5	126.5	126.8	106.7	109.7	112.2
1994							
March	112.6	74.6	102.7	115.8	108.5	98.1	93.9
June	113.4	75.9	102.5	116.5	104.1	97.3	94.8
September	114.0	81.4	100.4	116.3	104.8	98.9	97.0
December	114.9	89.6	102.3	115.5	104.2	101.3	100.7
1995							
March	115.9	92.4	115.2	118.6	105.1	104.2	104.7
June	116.7	101.0	121.5	120.0	105.4	107.8	110.0
September	117.1	109.4	119.2	122.7	106.3	111.3	114.8
December	116.6	106.2	122.0	121.8	106.4	110.4	113.3
1996							
March	116.5	105.9	118.1	123.7	106.3	110.4	113.4
June	116.3	104.9	120.9	124.9	106.1	110.6	113.8
September	116.6	98.7	125.4	125.7	106.2	109.2	111.7
December	117.1	96.8	127.6	125.6	106.4	108.9	111.1
1997							
March	117.8	98.5	127.2	127.6	107.0	110.0	112.6
June	118.8	99.9	125.8	128.4	107.1	110.6	113.4
September	119.6	103.0	127.3	128.5	105.5	111.2	115.1
December	118.9	100.9	127.3	128.5	105.4	111.0	114.8
1998							
March	118.9	96.9	127.3	129.8	106.2	111.6	115.2
ADELAIDE							
1993-94	107.8	95.7	113.7	117.8	104.5	106.0	106.6
1994-95	111.7	85.5	121.0	117.3	109.0	104.8	102.5
1995-96	112.8	94.0	131.5	120.5	109.7	109.3	108.9
1996-97	115.1	84.0	127.3	125.7	110.3	107.5	106.0
1994							
March	108.2	96.5	115.2	119.1	103.5	106.4	107.7
June	109.0	91.3	114.5	119.1	109.1	106.6	105.2
September	110.4	78.6	111.8	117.5	109.4	102.1	98.2
December	111.4	82.3	114.4	116.9	108.9	103.1	100.1
1995							
March	112.4	88.5	127.4	117.2	108.8	106.1	104.6
June	112.5	92.4	130.4	117.7	108.8	107.7	106.9
September	112.8	96.1	131.9	118.0	109.7	109.3	109.0
December	112.6	93.8	132.2	119.5	109.7	109.0	108.5
1996							
March	112.9	92.8	131.6	120.6	109.7	109.0	108.5
June	112.9	93.1	130.1	123.7	109.7	109.8	109.7
September	113.3	87.6	130.1	125.5	109.7	108.6	107.9
December	115.2	80.7	127.8	125.7	110.2	106.5	104.5
1997							
March	115.7	82.9	126.9	125.7	110.6	107.2	105.4
June	116.1	84.8	124.2	125.8	110.6	107.7	106.0
September	116.2	87.1	124.7	125.7	108.9	107.8	107.1
December	116.6	79.2	124.6	125.7	108.9	107.3	106.2
1998							
March	116.4	79.9	127.5	126.3	108.5	107.6	107.1

(a) Base of each index: 1989-90 = 100.0

MECHANICAL SERVICES COMPONENTS.....					PLUMBING MATERIALS.....			
Period	Air conditioning	Fire protection	Elevators, escalators and travelators	All mechanical services	Hydraulic plumbing	Drainage	Roof plumbing	All plumbing materials
BRISBANE								
1993-94	108.6	112.3	94.2	106.8	115.4	120.3	106.9	112.9
1994-95	110.3	115.0	95.3	108.5	119.4	124.8	102.8	116.5
1995-96	113.6	119.0	99.5	112.3	126.5	125.7	101.5	122.7
1996-97	116.1	120.7	99.4	113.9	126.7	127.1	105.6	123.1
1994								
March	108.1	112.2	94.2	106.5	115.4	121.4	107.1	112.9
June	107.6	112.6	93.8	106.2	113.6	118.1	105.8	111.0
September	108.5	113.5	94.5	107.0	116.1	120.9	104.4	113.4
December	109.3	115.2	94.2	107.7	118.2	124.9	104.4	115.6
1995								
March	111.0	115.3	95.6	109.0	120.5	126.8	104.4	117.6
June	112.2	116.0	96.7	110.1	122.6	126.7	97.8	119.3
September	113.3	117.3	98.0	111.4	129.5	129.0	99.2	125.4
December	113.0	119.6	99.6	112.0	127.5	125.5	99.2	123.5
1996								
March	113.7	119.6	99.8	112.5	124.2	124.0	103.7	120.7
June	114.5	119.6	100.4	113.2	124.9	124.2	103.7	121.3
September	115.5	120.1	100.8	113.9	125.4	125.3	103.9	121.8
December	115.9	120.5	99.5	113.8	125.6	126.6	104.0	122.1
1997								
March	116.3	121.0	98.9	113.9	127.1	126.9	106.6	123.5
June	116.8	121.0	98.2	113.9	128.5	129.5	107.9	125.0
September	117.6	121.0	97.7	114.2	130.2	131.9	107.5	126.6
December	116.9	121.0	98.3	114.0	129.4	130.1	107.5	125.6
1998								
March	116.7	121.0	98.1	113.8	129.2	131.2	107.3	125.6
ADELAIDE								
1993-94	115.2	115.0	88.5	110.5	104.6	107.0	106.4	105.0
1994-95	117.1	119.5	87.1	111.7	109.7	117.7	109.1	110.4
1995-96	118.7	126.3	90.8	115.0	115.8	113.8	111.8	115.7
1996-97	118.2	127.3	90.2	114.6	116.2	109.5	114.8	115.9
1994								
March	115.2	115.1	88.3	110.4	104.2	107.7	105.7	104.6
June	115.1	115.5	86.5	109.9	104.3	108.6	108.3	104.8
September	115.3	116.4	86.6	110.1	106.1	112.8	109.1	106.8
December	116.9	119.5	85.9	111.3	109.0	117.4	109.1	109.8
1995								
March	118.4	118.9	87.5	112.5	111.6	120.8	109.1	112.3
June	117.6	123.2	88.2	113.0	112.1	119.6	109.1	112.6
September	118.7	125.8	88.0	114.0	116.4	119.4	109.6	116.6
December	118.4	126.0	91.1	114.9	115.1	114.5	109.2	115.0
1996								
March	118.6	126.3	91.6	115.1	115.3	111.6	114.1	115.2
June	119.2	127.0	92.4	115.9	116.4	109.7	114.1	116.0
September	119.1	127.2	92.3	115.8	116.0	107.6	114.1	115.5
December	118.0	127.2	90.3	114.5	115.5	106.8	114.1	115.0
1997								
March	118.2	127.2	89.4	114.4	116.3	108.6	114.9	115.9
June	117.6	127.4	88.7	113.8	117.0	114.9	116.1	117.1
September	118.1	127.5	88.4	114.1	118.1	116.9	116.1	118.1
December	118.6	127.5	88.9	114.5	118.5	118.3	114.3	118.7
1998								
March	118.4	128.8	89.4	114.7	117.6	123.9	114.3	118.5

(a) Base of each index: 1989-90 = 100.0

ELECTRICAL
MATERIALS.....

Period	<i>All groups excluding electrical materials and mechanical services</i>	<i>Conductors</i>	<i>Conduit and accessories</i>	<i>Switchboards and switchgear</i>	<i>Lamps and light fittings</i>	<i>All electrical materials</i>	<i>All electrical materials excluding lamps and light fittings</i>
PERTH							
1993-94	108.3	84.7	120.6	113.7	107.5	102.0	99.7
1994-95	111.3	97.6	130.7	115.0	108.2	107.3	107.5
1995-96	113.4	108.2	142.2	116.0	112.0	113.0	114.2
1996-97	115.3	102.2	147.3	117.2	108.1	110.6	112.5
1994							
March	108.5	81.3	120.6	113.9	106.4	100.6	98.3
June	109.3	83.8	121.9	114.2	106.0	101.4	99.6
September	110.3	89.6	122.5	114.5	106.9	103.6	102.6
December	110.5	94.9	126.7	114.6	106.6	105.5	105.6
1995							
March	111.7	100.7	136.4	115.3	109.7	109.3	109.7
June	112.6	105.1	137.0	115.6	109.7	110.8	111.9
September	113.5	109.8	139.7	115.6	111.3	113.0	114.4
December	113.4	107.8	141.1	115.6	111.8	112.7	113.7
1996							
March	113.5	107.4	141.8	115.8	111.8	112.6	113.7
June	113.2	107.8	146.3	116.8	113.1	113.8	114.8
September	114.3	102.7	147.7	116.9	108.9	111.0	112.7
December	114.9	99.9	147.9	117.1	107.4	109.7	111.5
1997							
March	115.7	102.3	148.0	117.2	108.0	110.7	112.7
June	116.1	103.8	145.4	117.5	108.0	111.0	113.2
September	116.1	105.2	146.8	117.5	106.4	111.0	113.9
December	115.6	101.9	140.7	117.0	106.4	109.9	112.1
1998							
March	115.0	101.9	144.8	113.1	102.3	107.2	110.4
HOBART							
1993-94	111.0	87.7	114.7	122.9	99.7	104.7	107.0
1994-95	112.7	107.0	126.3	123.8	96.3	110.8	118.0
1995-96	115.5	126.9	136.6	125.3	97.1	118.6	129.2
1996-97	116.8	121.9	135.8	128.5	95.7	117.4	128.1
1994							
March	110.8	84.9	115.5	123.8	98.3	103.7	106.2
June	111.0	90.3	118.4	123.7	97.4	105.3	109.1
September	111.6	96.3	118.3	123.6	96.4	106.8	111.9
December	112.2	102.0	119.4	123.6	96.5	108.8	114.7
1995							
March	112.7	110.0	131.7	123.9	96.1	112.2	120.1
June	114.1	119.5	135.8	124.0	96.1	115.5	125.1
September	115.3	127.4	139.6	124.1	96.7	118.6	129.3
December	115.7	127.1	140.6	124.5	96.7	118.6	129.5
1996							
March	115.6	126.4	134.6	124.3	97.2	118.1	128.4
June	115.3	126.5	131.5	128.1	97.7	119.1	129.6
September	116.3	123.8	134.0	128.7	89.0	115.7	128.9
December	116.5	122.4	134.8	128.7	97.9	118.3	128.3
1997							
March	117.0	121.8	135.2	128.7	97.9	118.1	128.0
June	117.3	119.7	139.3	127.8	97.9	117.5	127.2
September	117.1	119.7	139.7	127.9	97.8	117.6	127.3
December	117.7	123.1	139.4	127.9	97.9	117.8	127.7
1998							
March	118.2	123.1	139.4	128.4	95.4	116.9	128.0

(a) Base of each index: 1989-90 = 100.0

MECHANICAL SERVICES COMPONENTS.....					PLUMBING MATERIALS.....			
Period	Air conditioning	Fire protection	Elevators, escalators and travelators	All mechanical services	Hydraulic plumbing	Drainage	Roof plumbing	All plumbing materials
PERTH								
1993-94	106.6	105.5	94.4	104.3	98.6	121.7	107.4	105.1
1994-95	109.6	109.8	95.2	106.8	107.8	130.4	109.8	114.4
1995-96	114.1	120.0	100.1	112.3	114.0	126.0	116.6	120.1
1996-97	114.0	126.6	99.9	113.3	113.4	119.8	121.4	119.2
1994								
March	106.7	105.4	94.2	104.2	98.6	123.6	106.9	105.2
June	107.1	105.8	93.5	104.3	99.7	123.9	109.0	106.4
September	108.0	104.7	94.9	105.0	103.9	126.2	109.8	110.5
December	109.1	106.7	94.2	105.7	108.2	130.4	109.8	114.8
1995								
March	110.0	111.7	95.3	107.3	108.7	131.7	109.8	115.3
June	111.4	116.1	96.3	109.1	110.2	133.1	109.8	116.9
September	113.2	116.1	95.8	109.8	113.8	134.1	113.3	120.4
December	113.6	117.8	100.9	112.0	113.9	129.4	113.7	120.2
1996								
March	114.4	119.6	101.5	112.9	113.8	123.5	119.6	119.9
June	115.0	126.4	102.2	114.5	114.3	116.8	119.7	119.9
September	114.4	125.1	102.1	114.0	111.6	119.3	119.7	117.5
December	114.0	124.4	100.1	113.0	112.0	119.1	119.7	117.8
1997								
March	113.8	128.4	99.2	113.2	114.2	118.0	120.8	119.9
June	113.8	128.4	98.1	112.9	115.6	122.7	125.3	121.6
September	114.4	128.4	97.8	113.1	118.5	126.0	126.8	124.7
December	114.5	127.7	98.3	113.3	118.8	126.1	126.8	124.9
1998								
March	114.1	128.1	98.7	113.2	118.5	125.3	126.4	124.6
HOBART								
1993-94	112.1	115.4	97.4	109.6	113.3	105.2	109.8	110.1
1994-95	115.5	120.5	98.8	112.6	129.6	108.5	114.2	124.6
1995-96	117.1	122.2	103.0	115.1	133.1	107.5	119.2	127.7
1996-97	119.6	123.0	104.3	117.0	127.3	104.9	126.7	122.8
1994								
March	111.9	116.9	97.3	109.7	111.4	104.3	109.4	108.3
June	113.2	117.0	96.8	110.2	117.0	104.8	112.9	113.3
September	113.6	117.1	98.5	111.0	121.6	106.1	113.6	117.5
December	115.0	120.5	97.8	112.0	128.7	107.8	113.9	123.8
1995								
March	116.2	122.1	98.8	113.2	133.5	110.0	114.1	128.1
June	117.1	122.1	100.0	114.1	134.4	110.1	115.0	128.9
September	116.7	122.1	99.6	113.8	134.3	108.4	117.5	128.7
December	116.3	122.1	104.0	114.9	132.7	108.7	118.0	127.4
1996								
March	117.1	122.1	103.8	115.3	132.8	108.7	119.6	127.6
June	118.3	122.5	104.4	116.2	132.4	104.1	121.6	127.0
September	119.0	122.7	106.1	117.1	131.1	107.9	127.0	126.3
December	119.0	122.7	104.9	116.8	125.2	103.6	124.7	120.8
1997								
March	119.6	123.3	103.5	116.8	125.8	103.8	125.7	121.4
June	120.8	123.3	102.6	117.1	127.0	104.1	129.2	122.5
September	121.0	123.3	100.8	116.6	127.2	104.1	130.5	122.8
December	120.5	124.4	101.8	116.8	126.6	102.3	129.6	122.0
1998								
March	121.1	125.7	101.9	117.4	126.6	99.1	129.6	121.6

(a) Base of each index: 1989-90 = 100.0

EXPLANATORY NOTES

INTRODUCTION

1 This publication presents index numbers measuring changes in prices of selected materials used in the construction of buildings other than houses — the *Price Index of Materials Used in Building Other than House Building*. It is calculated on the reference base 1989–90 = 100.0 for the six State capital cities.

SCOPE

2 The index includes 63 items which are combined into 10 industry of origin groups and an 'All groups' total. Table 1 presents 'All groups' index numbers for the weighted average of the six State capital cities, for each of the cities separately. Although many of the selected materials are also used in house building, in building repair, maintenance and alteration work and in engineering construction work (e.g. projects such as roads, dams, bridges and the like), the weighting pattern of the index is not applicable to these other activities of the construction industry. In addition, since the weights are based on an average materials usage over a range of types of building within the defined area (building other than house building), the index is not necessarily applicable to any specific building or type of building.

CLASSIFICATION

3 For the weighted average of the six State capital cities the selected materials have been combined into broad groups on an industry of origin basis. Table 4 presents index numbers for groups defined in terms of the Groups (3 digit level) of the 1993 *Australian and New Zealand Standard Industrial Classification* (ANZSIC); the percentage contributions for individual materials and groups are shown in table A1 of the Appendix of the October 1993 issue of this publication. The 'industry of origin' is not necessarily identical to the industry which supplies the materials to builders. The 'industry of origin' is the industry in which the material is *primarily produced*, determined in accordance with the classification rules of the ANZSIC. For instance, many of the materials are classified to the appropriate producing industries, rather than the wholesale trading industries. Some materials used in constructing buildings in Australia are imported. Imported materials are allocated to the similar industry of origin as Australian produced materials.

ITEMS AND WEIGHTS

4 The index is a fixed weights index. The items were selected and allocated weights in accordance with the estimated average values of materials used in the construction of buildings other than houses completed in each of the seven capital cities in the five years ended June 1992. This same weighting pattern is used for each of the six capital cities. The weighting pattern for the 'All groups' index is set out in Appendix A of the October 1993 issue of this publication.

PRICE MEASUREMENT

5 Prices relate to specific standards of each material and are obtained from representative suppliers of materials used in building. In general, the point of pricing is 'delivered on site' but in some cases it has been necessary to use the nearest realistic price available e.g. 'delivered to electrical contractor's store'. Local prices are used in the indexes for each capital city.

6 As far as possible, actual transactions prices are used in this index — that is, prices actually paid by building contractors or subcontractors to suppliers for materials delivered on building sites. The actual price paid for anything can be described in various ways. Instead of being described as a single price (as usually happens in retail shops) a price for a building material may be described in terms of the components which make up the price — for instance 'list price plus sales tax', 'suppliers price plus freight', 'basic price less (particular types of) discount' and so on. It is these *net* prices that buyers pay to sellers for materials that the ABS aims to use in compiling this index.

EXPLANATORY NOTES

7 The ABS asks respondent businesses to report details of the discounts they offer so that actual transaction prices can be calculated. However, as building material suppliers offer many different types of discounts to buyers (e.g. trade discounts, settlement discounts, quantity discounts, competitive discounts), the identification of the discounts and the way in which they are applied by sellers pose considerable problems for the ABS. To the extent that discounts are identified and measured, their effects are taken into account in calculating the index. Sometimes new discounts, or changes in the way discounts are applied by sellers, are identified only after index numbers for a particular period have been published. In such cases, or in any other case where it is discovered that incorrect prices have been used in compiling the indexes, revisions to index numbers may occur in subsequent issues of this publication.

8 To minimise the incidence of revisions, the ABS has stringent procedures to verify that prices reported in its mail collections are transactions prices net of discounts.

9 Sales taxes levied on building materials are included in the prices used to compile the index. Materials used in the construction of Commonwealth, State and Local Government owned buildings are exempt from sales tax; materials used in most non-government 'health' and 'education' buildings and buildings for non-profit organisations such as religious and charitable institutions are also exempt. At any particular time, when there is a change in the rate of sales tax on building materials, the movement in the index takes into account the proportion of materials sold subject to sales tax and the proportion of materials exempt from sales tax.

10 On request, the ABS can provide further information on the treatment of sales tax in the index including details of factors to either include the full effects of sales tax changes or exclude entirely the effects of sales tax changes.

INDEX NUMBERS

11 Index numbers for financial years are averages of quarterly index numbers.

SELECTED MATERIALS

12 Table 5 contains index numbers for selected materials used in constructing buildings other than houses for the weighted average of the six State capital cities. In general these indexes relate to either single items or combinations of items as shown in the weighting pattern published in table A1 of the Appendix to the October 1993 issue of this publication. Tables 6 to 9 contain index numbers for selected major materials for each State capital city.

SPECIAL COMBINATIONS OF MATERIALS

13 Tables 10 to 12 contain index numbers for the following special combinations of materials, for the weighted average of the six State capital cities and each State capital city:

- All groups excluding electrical materials and mechanical service components
- Electrical materials
- Mechanical services components
- Plumbing materials

REVISIONS

14 In cases where more complete information is obtained after index numbers for a period have been published, or it is discovered that incorrect prices have been used in compiling the indexes, revisions to index numbers may occur in subsequent issues of this publication.

ANALYSIS OF INDEX CHANGES

15 Care should be exercised when interpreting quarter-to-quarter movements in the indexes as short-term movements do not necessarily indicate changes in trend.

16 The separate city indexes measure price movements over time in each capital city individually. They do not measure differences in price levels between cities.

EXPLANATORY NOTES

ANALYSIS OF INDEX CHANGES *continued*

17 Movements in indexes from one period to another can be expressed either as changes in 'index points' or as percentage changes. The following example illustrates the method of calculating index points changes and percentage changes between any two periods:

Weighted average of six State
capital cities index numbers —

March Quarter 1998 114.1 (see Table 1)

less March Quarter 1997 113.4 (see Table 1)

Change in index points 0.7

Percentage change $\frac{0.7}{113.4} \times 100 = 0.6$

18 Table 3 provides an analysis of the contribution which selected major building materials make to the All groups index for the weighted average of the six State capital cities. For example, Ready mixed concrete contributed 10.13 index points to the All groups index number of 114.1 for March Quarter 1998 and -0.03 index points to the net change of 0.1 index points.

FURTHER INFORMATION

19 Further information on the index is presented in the publication *Producer and Foreign Trade Price Indexes: Concepts, Sources and Methods* (6419.0).

RELATED PUBLICATIONS

20 Users may also wish to refer to the following price index publications which are available from ABS Bookshops:

- *Price Index of Materials Used in House Building, Six State Capital Cities* (6408.0)
- *Price Indexes of Materials Used in Manufacturing Industries, Australia* (6411.0)
- *Price Indexes of Articles Produced by Manufacturing Industry, Australia* (6412.0)
- *Price Indexes of Copper Materials, Australia* (6410.0).

21 Other ABS publications that may be of interest include:

- *Award Rates of Pay Indexes, Australia* (6312.0)
- *Average Weekly Earnings, States and Australia* (6302.0).

UNPUBLISHED STATISTICS

22 Current publications produced by the ABS are listed in the *Catalogue of Publications and Products, Australia* (1101.0). The ABS also issues, on Tuesdays and Fridays, a *Release Advice* (1105.0) which lists publications to be released in the next few days. The Catalogue and Release Advice are available from any ABS office.

23 As well as the statistics included in this and related publications, the ABS may have other relevant unpublished data available. Inquiries should be made to Robert Adams on 02 6252 6198 or to any ABS office.

SYMBOLS AND OTHER USAGES

ANZSIC Australian and New Zealand Standard Industrial Classification
r figure or series revised since previous issue

EXPLANATORY NOTES



The ABS publishes a wide range of information on Australia's economic and social conditions. A catalogue of publications and products is available from any of our offices (see below).

INFORMATION CONSULTANCY SERVICES

Information tailored to special needs of clients can be obtained from the Information Consultancy Service available at ABS Offices (see below).

ABS PRODUCTS

A large number of ABS products is available from the ABS Bookshops (see below). The ABS also provides a subscription service – you can telephone the ABS Subscription Service Australia wide toll free on 1300 3663 23.

ELECTRONIC SERVICES

A large range of data is available via on-line services, diskette, magnetic tape, tape cartridge and CD ROM. For more details about our electronic data services, contact any ABS office (see below) or e-mail us at:

- client.services@abs.gov.au

GENERAL SALES AND INQUIRIES

- Sydney 02 9268 4611
 - Melbourne 03 9615 7755
 - Brisbane 07 3222 6351
 - Perth 08 9360 5140
 - Adelaide 08 8237 7100
 - Hobart 03 6222 5800
 - Darwin 08 8943 2111
 - Canberra 02 6252 6627
- Information Services, ABS
PO Box 10, Belconnen ACT 2616



2640700003987

ISSN 1325-2151

RRP \$17.00